

## INDICATIVE SEAL

### FORT DOMINO SP (FDMSP)

Fixed Length Seal

***Improved design for easier identification of potential tampering.***

Fort Domino Seal is a fixed metal strap seal in Mega Fortris indicative seal range. The metal strap is flexible with a large flap for identifier marking. The seal is designed to settle close to the application surface, preventing damage during rough handling. The latest feature of this seal is a user-friendly telltale sign of tampering through observing the breaking line on the cap.

#### Applications:

- Retail Applications
- Chemical and Oil Refinery
- Warehousing and Logistics
- Authentication Tagging



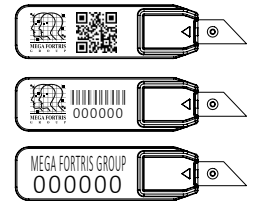
PREVENTION · PROTECTION · PEACE OF MIND



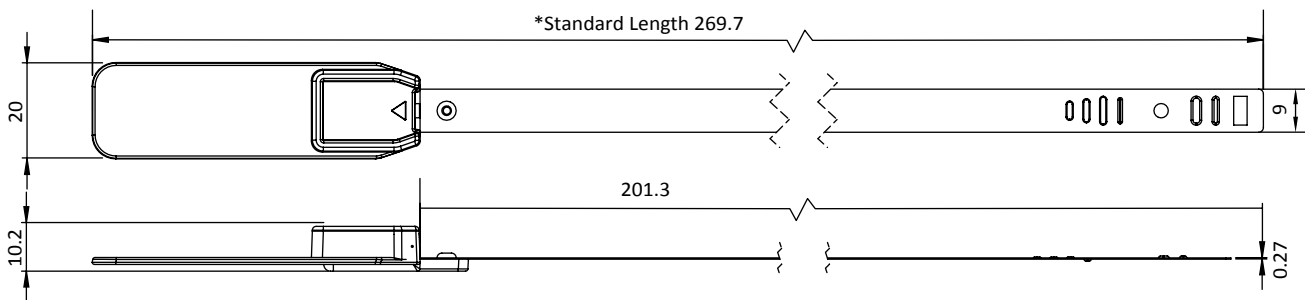


- 1 The Fort Domino SP seal is moulded with Polypropylene (PP) material ultrasonically and heat staking welded over a tin-plated metal strap.
- 2 One-way locking mechanism is embedded for fast and easy application.
- 3 Irreversible identifiers such as name, logo, barcode, serial number and QR code are laser-marked on the flap.
- 4 Biodegradable additives for the plastic material are available.
- 5 Different strap lengths are available to cater to different applications.
- 6 With the breaking line on the cap, it enables the user to directly notice any sign of tampering without needing to check in detail.
- 7 The seal includes an audio-haptic feature, illustrating the seal is securely locked.

LASER MARKING OPTION



VIEW APPLICATION GIF



TECHNICAL SPECIFICATIONS

PRODUCT - FORT DOMINO SP (FDMSP)					
Code	Material	Locking Length	Tensile Strength	Marking Area	Max Marking Digits
FDMSP	<b>Plastic :</b> Polypropylene (PP) <b>Strap :</b> Tin-plated Metal	LL : 210 mm (8.3 in) TL : 269.7 mm (10.62 in)	$\leq 75 \text{ Kg/f}$ $(\leq 165.35 \text{ lbf})$	18 x 40 (0.7 x 1.6 in)	<b>Serial no :</b> 12 <b>Barcode :</b> 12

PACKAGING

Carton	Quantity	Dimensions (mm)	Gross Weight (kg)	Volume (m <sup>3</sup> )	Standard Colours
FDMSP Inner	1000	362 x 222 x 255 (14.3 x 8.7 x 10.0 in)	6.4 (14.1 lb) 7.5 (16.5 lb)	0.02 (0.7 cu.ft.)	Body : WH Cap : WH, PSYL, PSOR, PSRD, PSBL, PSGN, TRNS, BLCK, MILKY (with added Biodegradable)

For colour customisations, kindly contact us for further information.

Updated Date : 1 February 2023