



**MEGA FORTRIS**  
G R O U P

## SECURITY SEAL

# SP MINI CABLE LOCK 200 (SPMCL 200)

Pull-Tight Barrier Seal

### ***Substantial surface and body for operation efficiency.***

The SP Mini Cable Lock is ultrasonically welded with a coloured cover and white base plate. This feature allows for colour coding and ease of identification from afar. It is very user-friendly and highly tamper-evident to maximise security of assets.

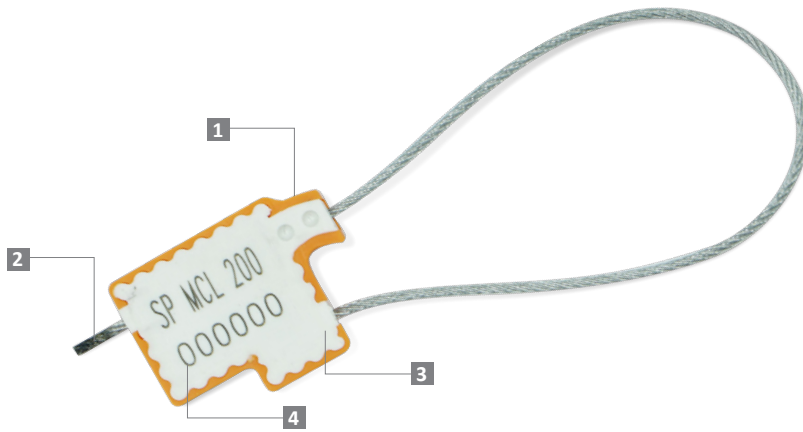
#### Applications:

- Valve Sealing
- Retail Applications
- Logistics
- Banking



PREVENTION · PROTECTION · PEACE OF MIND





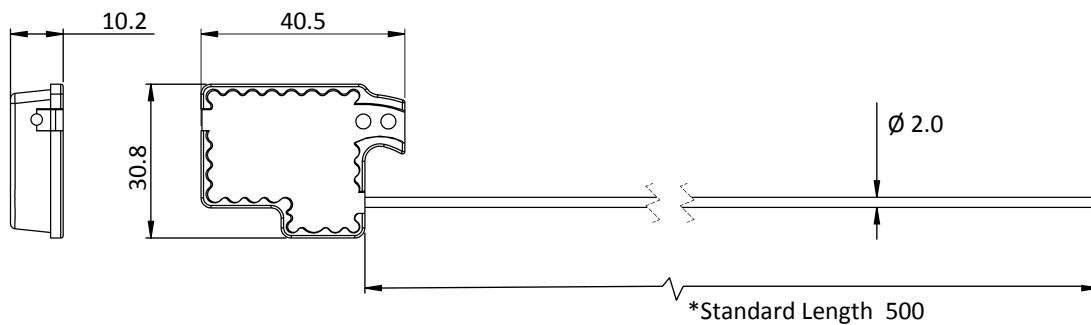
LASER MARKING OPTION



VIEW APPLICATION GIF



- 1 SP Mini Cable Lock is constructed with a tough shell of Polypropylene (PP) and aluminium locking mechanism for security requirements. Multiple colours are available to be ultrasonically welded to the white base plate.
- 2 One-way locking mechanism is embedded for fast and easy application.
- 3 Two colours on the body improved laser markings definition, visibility, and identification.
- 4 Irreversible identifiers such as name, logo, barcode, serial number and QR code are laser-marked on the body.
- 5 Biodegradable additives for plastic material are available.
- 6 Plastic material can withstand extreme weather conditions of -5°C to 80°C.



TECHNICAL SPECIFICATIONS

\*Customisable cable length upon request.

PRODUCT - SP MINI CABLE LOCK 200 (SPMCL 200)

Code	Material	Cable Length	Cable Diameter	Tensile Strength	Marking Area	Max Marking Digits
SPMCL 200	<b>Body :</b> Polypropylene (PP) <b>Plastic :</b> Aluminium <b>Locking Component:</b> Aluminium <b>Cable:</b> Galvanised Steel Wire	500 mm (19.7 in)	∅ 2.0 mm (0.1 in)	≥150 kgf (≥330.7 lbf)	24 x 16 mm (0.9 x 0.6 in)	<b>Serial no :</b> 8 <b>Barcode :</b> 8

PACKAGING

Carton	Quantity	Dimensions (mm)	Gross Weight (kg)	Volume (m <sup>3</sup> )	Standard Solid Colours
Inner	200	288 x 178 x 146 (11.3 x 7.0 x 5.7 in)	5.98 (13.2 lb)	0.007 (0.2 cu.ft.)	Body : WH BL YL GN OR RD Marking flap : WH

Carton size and weight vary according to cable length. Figures shown in the table are for the standard cable length packaging. Please contact us for additional details.

For colour customisations, kindly contact us for further information.

Updated Date : 29 March 2022