

## INDICATIVE SEAL

### SP CASH BAG SEAL (SPCBS)

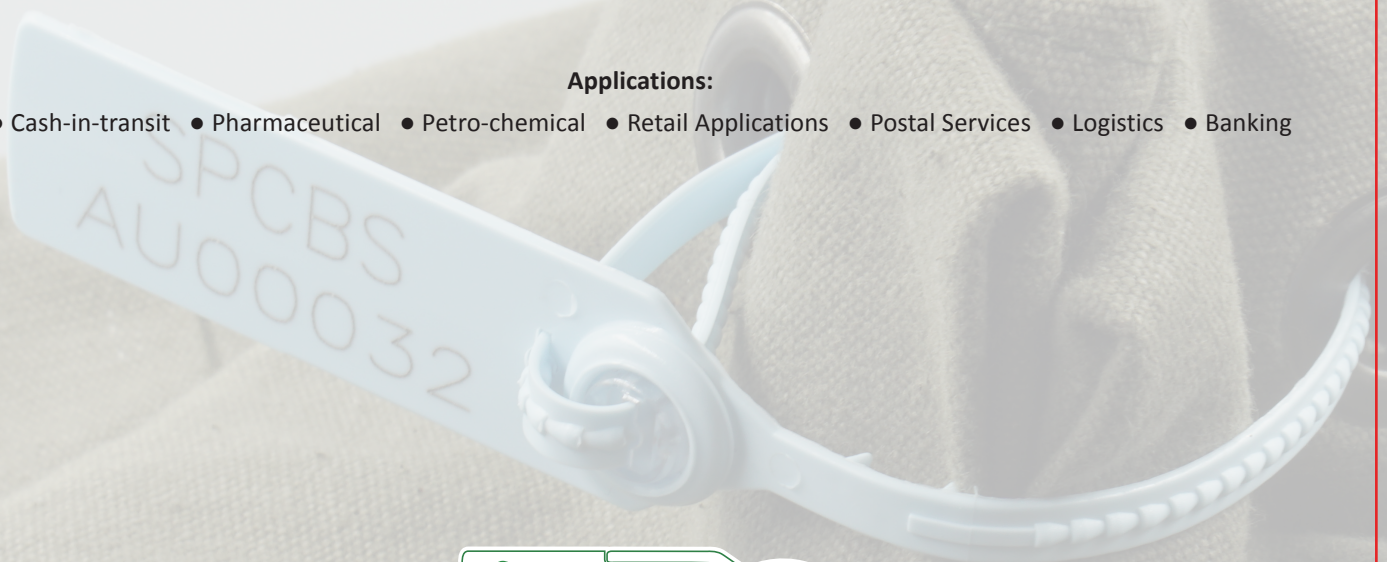
Pull-Tight Seal

***Bold and diversified design for durability and versatility.***

SSP Cash Bag Seal is fundamentally designed with a rigid structure. The seal features an extensive range of variations to provide security option for any application. With the signature one-way locking mechanism, it is user-friendly to seal and remove.

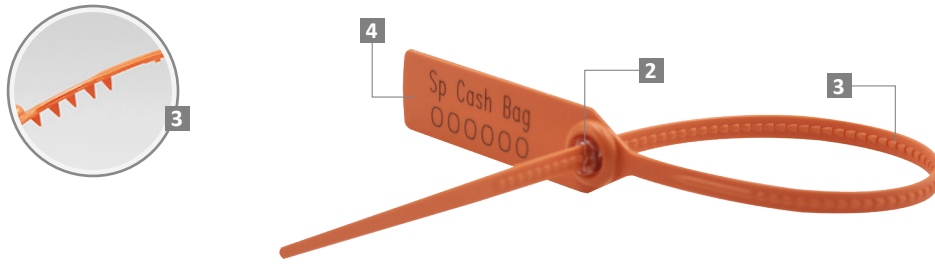
#### Applications:

- Cash-in-transit
- Pharmaceutical
- Petro-chemical
- Retail Applications
- Postal Services
- Logistics
- Banking



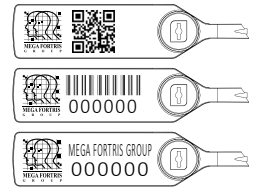
PREVENTION · PROTECTION · PEACE OF MIND



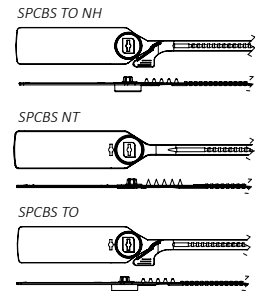
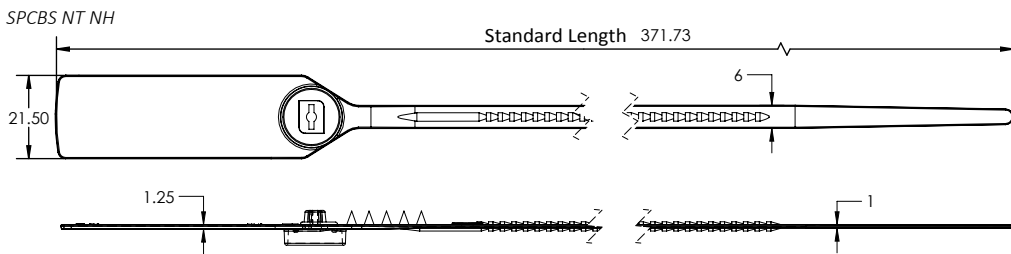


- 1 The SP Cash Bag Seal is moulded with Polypropylene (PP) or high-impact Nylon (NY) material with the metal lock ultrasonically encapsulated to complement the long thick strap.
- 2 The locking ribs on both sides of the locking strap provide greater locking security, while the on the back of the seal provide better grip and stronger endurance during application. Evidence of tampering is obvious on the strap.
- 3 Tear-off feature allows quick removal of the seal.
- 4 The larger flap allows ample space for irreversible laser marking of identifiers such as name, logo, barcode, serial number and QR code.
- 5 An optional hole (H) across all SPCBS is available for the neat appearance after sealing.
- 6 Biodegradable additives for plastic material are available.

LASER MARKING OPTION



VIEW APPLICATION GIF



TECHNICAL SPECIFICATIONS

PRODUCT - SP CASH BAG (SPCBS)

| Code        | Material   | Locking Length    | Locking Size       | Tensile Strength                     | Marking Area                 | Max Marking Digits                           |
|-------------|--|-------------------|--------------------|--------------------------------------|------------------------------|--|
| SPCBS NT NH | <b>Plastic :</b><br>Polypropylene (PP)<br>Temperature Range:<br>-5°C to 80°C | 250 mm<br>(10 in) | 6.0 mm<br>(0.2 in) | <b>PP:</b><br>≥25 kgf<br>(≥55.1 lbf) | 18 x 50 mm<br>(0.7 x 2.0 in) | <b>Serial no : 10</b><br><b>Barcode : 11</b> |
| SPCBS TO NH |  |                   |                    |                                      |                              |  |
| SPCBS NT    | High-impact Nylon (NY)<br>Temperature Range:<br>-25°C to 80°C                |                   |                    | <b>NY:</b><br>≥28 kgf<br>(≥61.7 lbf) |                              |  |
| SPCBS TO    | <b>Metal Jaw :</b><br>Stainless Steel (SUS 304)                              |                   |                    |                                      |                              |  |

PACKAGING

| Carton | Quantity | Dimensions (mm)                           | Gross Weight (kg) | Volume (m <sup>3</sup> ) | Standard Pastel / Solid Colours   |
|--------|----------|---|-------------------|--------------------------|---|
| Inner  | 1000     | 465 x 260 x 190<br>(18.3 x 10.2 x 7.5 in) | 4.8<br>(10.6 lb)  | 0.023<br>(0.8 cu.ft.)    | <b>Polypropylene :</b><br>Body : WH PSYL PSOR PSRD PSBL PSGN<br>Cap : TRNS WH MILKY (BIO) |

**Nylon :**

Body : WH B YL G RD

Cap : TRNS WH MILKY (BIO)

For colour customisations, kindly contact us for further information.

Updated Date : 29 March 2022