



**MEGA FORTRIS**  
G R O U P

## INDICATIVE SEAL

# MEGA TRUCK SEAL WITH AND WITHOUT FLAP (MTK WF) & (MTK)

## Fixed Length Seal

### ***Rigid locking mechanism and seal structure for durability and security.***

Mega Truck Seal has a uniquely designed locking mechanism and structure to provide high tensile strength while withstanding rough handling. The seal is user-friendly with an optional flap of a large marking area for identifiers. The smooth surface and ribbed section help with gripping and enhance operational efficiency.

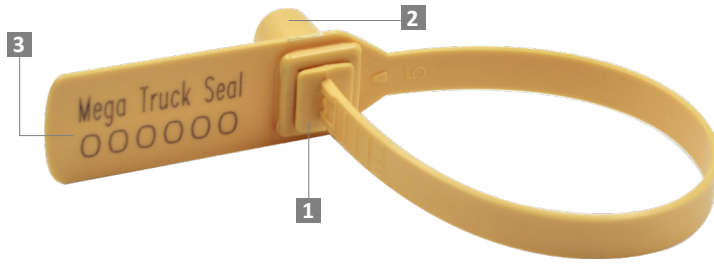
#### **Applications:**

- Retail Applications
- Chemical and Oil Refinery
- Warehousing and Logistics
- F&B Applications



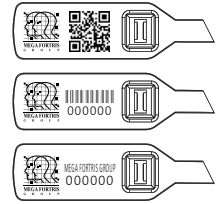
PREVENTION · PROTECTION · PEACE OF MIND



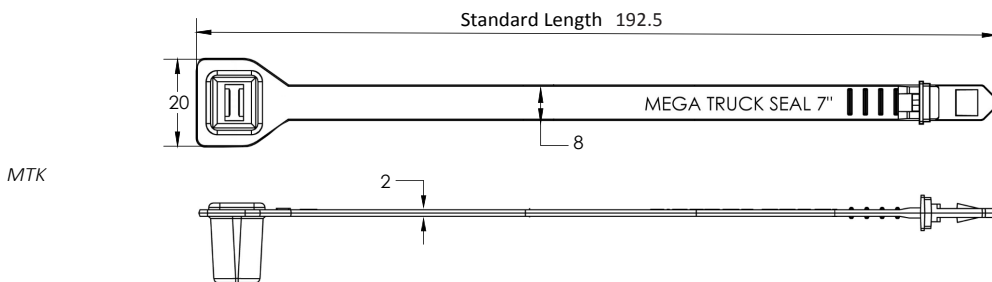
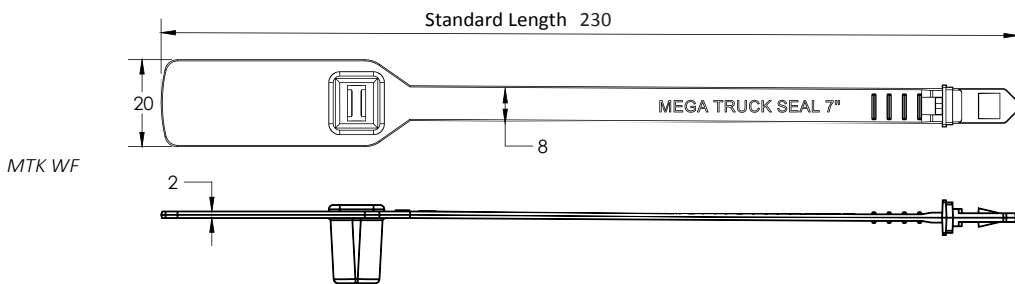


- 1 Mega Truck Seal has a uniquely designed locking mechanism and structure to provide high tensile strength while withstanding rough handling. The seal is user-friendly with an optional flap of a large marking area for identifiers. The smooth surface and ribbed section help with gripping and enhance operational efficiency.
- 2 One-way double locking mechanisms are embedded for easy application and prevent tampering.
- 3 The large flap allows ample space for irreversible identifiers such as name, logo, barcode, serial number and QR code to be laser-marked on the flap, and optionally on the strap.
- 4 Biodegradable additives for plastic material are available.

LASER MARKING OPTION



VIEW APPLICATION GIF



TECHNICAL SPECIFICATIONS

PRODUCT - MEGA TRUCK SEAL WITH FLAP (MTK WF) & MEGA TRUCK SEAL (MTK)

Code	Material	Locking Length	Locking Size	Tensile Strength	Marking Area	Max Marking Digits
MTK WF	<b>Plastic :</b> Polypropylene (PP) Temperature Range: -5°C to 80°C	166 mm (6.5 in)	8 mm (0.3 in)	>55 kgf (>121.3 lbf)	15 x 30 mm (0.8 x 1.2 in) & 10 x 4 mm (0.4 x 0.16 in)	<b>Serial no : 8</b> <b>Barcode : 8</b>
MTK					10 x 4 mm (0.4 x 0.16 in)	

PACKAGING

Carton	Quantity	Dimensions (mm)	Gross Weight (kg)	Volume (m³)	Standard Pastel Colours
MTK WF Inner	1000	465 x 285 x 310 (18.3 x 11.2 x 12.2 in)	5.2 (11.5 lb)	0.041 (1.4 cu.ft.)	Body : <span>WH</span> <span>PSYL</span> <span>PSOR</span> <span>PSRD</span> <span>PSBL</span> <span>PSGN</span> Cap : <span>WH</span> <i>For colour customisations, kindly contact us for further information.</i>
MTK Inner		362 x 290 x 225 (14.3 x 11.4 x 8.9 in)	4.15 (9.15 lb)	0.024 (0.8 cu.ft.)	

Updated Date : 29 March 2022