



**MEGA FORTRIS**  
G R O U P

## INDICATIVE SEAL

### KEESEAL (KES)

Pull-Tight Seal

***Ruler-like strap for locking precision.***

KEESEAL is a plastic indicative seal with a measurement ruler embedded at the back of the seal. In addition to its main function as a security seal in securing assets, the embedded ruler can also be utilized as a tool for security measurement.

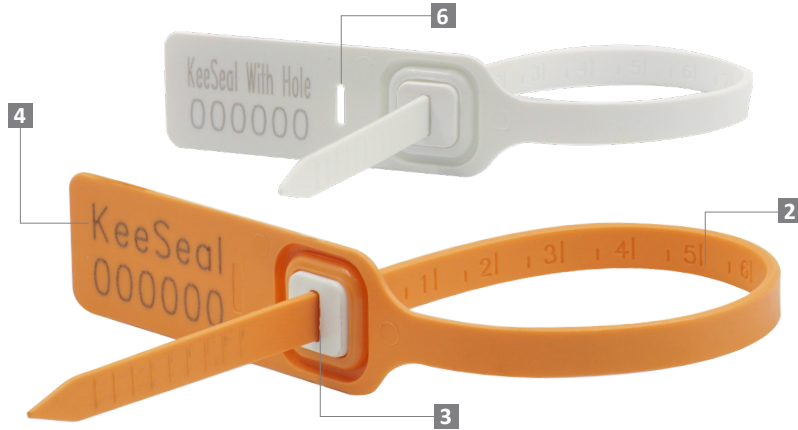
**Applications:**

- Retail Applications
- Authentication Tagging
- Logistics
- Banking

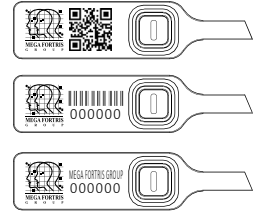


PREVENTION · PROTECTION · PEACE OF MIND





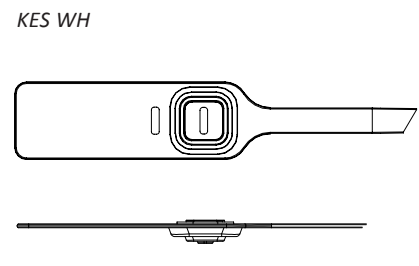
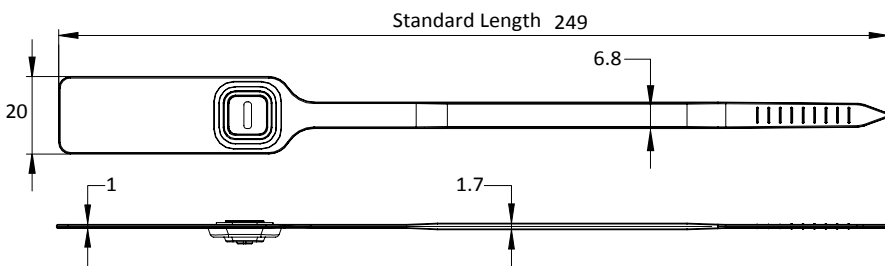
LASER MARKING OPTION



VIEW APPLICATION GIF



- 1 The KEESEAL is moulded with Polypropylene (PP) material with the metal lock ultrasonically encapsulated to complement the long thick strap.
- 2 The strap is designed with a brief ruler at the back for measuring and clear indication of tampering.
- 3 One-way locking mechanism is embedded for fast and easy application.
- 4 Irreversible identifiers such as name, logo, barcode, serial number and QR code are laser-marked on the flap.
- 5 Biodegradable additives for plastic material are available.
- 6 An optional hole on the flap is designed for a neat appearance after sealing.



TECHNICAL SPECIFICATIONS

PRODUCT - KEESEAL (KES)

Code	Material	Locking Length	Locking Size	Tensile Strength	Marking Area	Max Marking Digits
KES	<b>Plastic :</b> Polypropylene (PP) Temperature Range: -5°C to 80°C <b>Metal Jaw :</b> Stainless Steel (SUS 304)	158 mm (6 in)	6.8 mm (0.3 in)	>25 kgf (>55.1 lbf)	16 x 33 mm (2.6 x 1.3 in)	<b>Serial no : 12</b> <b>Barcode : 10</b>

PACKAGING

Carton	Quantity	Dimensions (mm)	Gross Weight (kg)	Volume (m³)	Standard Pastel Colours
Inner	1000	330 x 220 x 155 (13.0 x 8.7 x 6.1 in)	3.62 (8.0 lb)	0.011 (0.4 cu.ft.)	Body : WH PSYL PSOR PSRD PSBL PSGN Cap : WH

For colour customisations, kindly contact us for further information.

Updated Date : 29 March 2022