

## INDICATIVE SEAL

### Fleet Lock (FL)

Fixed Length Seal

***Slim and ring-shaped structure for prudent security application.***

Fleet Lock features a thin flat structure to accommodate a variety of applications without compromising its securing ability. The seal is user-friendly and has a large marking area on the flap for detailed identifiers and easy reading. The one-piece plastic moulded seal has a wide range of user-friendly applications. A stronger seal structure for security in heavy duty.

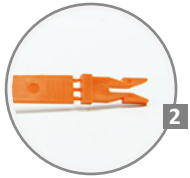
**Applications:**

- Retail Applications
- Chemical and Oil Refinery
- Warehousing and Logistics
- F&B Applications

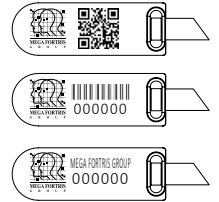


PREVENTION · PROTECTION · PEACE OF MIND





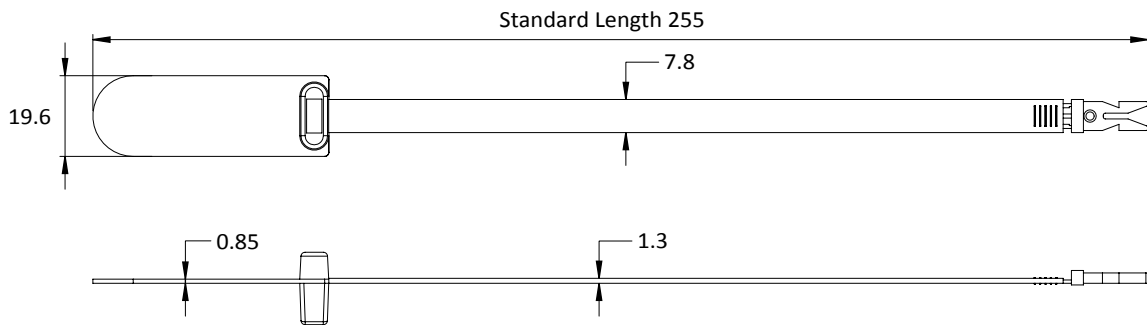
LASER MARKING OPTION



VIEW APPLICATION GIF



- 1 The Fleet Lock is moulded with Polypropylene (PP) material with security breaking lines at the snapping point for better security during locking. The lines double as clear evidence of tampering should the seal be glued or welded together.
- 2 The one-way double locking mechanism of this seal is presented at the locking end as it clasps through the locking chamber, hence ensuring proper sealing and prevents tampering via the back of the seal.
- 3 The large flap allows ample space for irreversible identifiers such as name, logo, barcode, serial number and QR code to be laser-marked on it.
- 4 Biodegradable additives for plastic material are available.



TECHNICAL SPECIFICATIONS

PRODUCT - FLEET LOCK (FL)

Code	Material	Locking Length	Locking Size	Tensile Strength	Marking Area	Max Marking Digits
FL	<b>Plastic :</b> Polypropylene (PP) Temperature Range: -5°C to 80°C	198 mm (7.8 in)	7.8 mm (0.3 in)	≥10 kgf (≥22.0 lbf)	16 x 53 mm (0.6 x 2.1 in)	<b>Serial no : 10</b> <b>Barcode : 11</b>

PACKAGING

Carton	Quantity	Dimensions (mm)	Gross Weight (kg)	Volume (m <sup>3</sup> )	Standard Pastel Colours
Inner	1000	454 x 234 x 284 (17.9 x 9.2 x 11.2 in)	4.35 (9.6 lb)	0.03 (1.1 cu.ft.)	Body : <span style="border: 1px solid black; padding: 2px;">WH</span> <span style="border: 1px solid black; padding: 2px;">PSYL</span> <span style="border: 1px solid black; padding: 2px;">PSOR</span> <span style="border: 1px solid black; padding: 2px;">PSRD</span> <span style="border: 1px solid black; padding: 2px;">PSBL</span> <span style="border: 1px solid black; padding: 2px;">PSGN</span>

For colour customisations, kindly contact us for further information.

Updated Date : 29 March 2022