



MEGA FORTRIS
G R O U P

INDICATIVE SEAL

CLIP BOX SEAL (CBX)

Application Seal



Ample tamper-evident features in one for thorough security.

The Clip Box Seal is the classic tamper-evident clip box seal developed specifically for boxes and containers. It remains closely adjacent to the application surface and is sturdy enough to secure assets during rough handling. The seal is designed with a specific breaking point for quick removal and evidence of tampering.

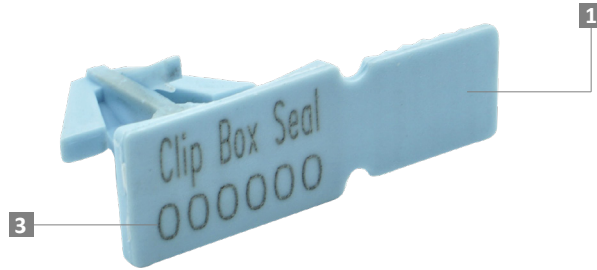
Applications:

- Authentication Tagging
- Evidence Securing
- Retail Applications
- Banking

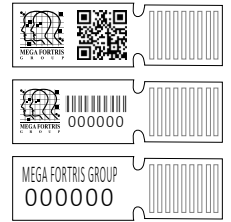


PREVENTION · PROTECTION · PEACE OF MIND





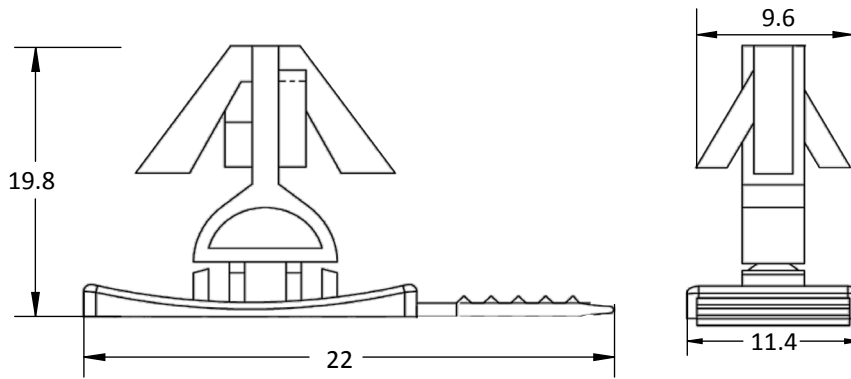
LASER MARKING OPTION



VIEW APPLICATION GIF



- 1 The Clip Box Seal is moulded with Polypropylene (PP) material with a grip at the end for quick detection of the breaking point and easy removal with clear evidence of tampering.
- 2 One-way snap-on locking mechanism of this seal allows for quick and tight sealing, as well as evidence of tampering or removal.
- 3 Irreversible identifiers such as name, logo, barcode, serial number and QR code are laser-marked on the flap.
- 4 Colour coding is possible with a wide range of pastel colour options available.
- 5 Biodegradable additives for plastic material are available.



TECHNICAL SPECIFICATIONS

PRODUCT - CLIP BOX SEAL (CBX)

Code	Material	Locking Length	Locking Size	Tensile Strength	Marking Area	Max Marking Digits
CBX	Plastic: Polypropylene (PP) temperature range: -5°C to 80°C	17.2 mm (0.7 in)	10 mm (0.4 in)	≥25 kgf (≥55.1 lbf)	7 x 18 mm (0.3 x 0.7 in)	Serial no : 6 Barcode : 5

PACKAGING

Carton	Quantity	Dimensions (mm)	Gross Weight (kg)	Volume (m³)	Standard Pastel Colours
Inner	1000	279 x 225 x 190 (10.9 x 8.9 x 7.5 in)	1.85 (4.08 lb)	0.012 (0.4 cu.ft.)	Body : WH PSYL PSOR PSRD PSBL PSGN

For colour customisations, kindly contact us for further information.

Updated Date : 30 March 2022