

## INDICATIVE SEAL

### SP CASH BAG SEAL (SPCBS)

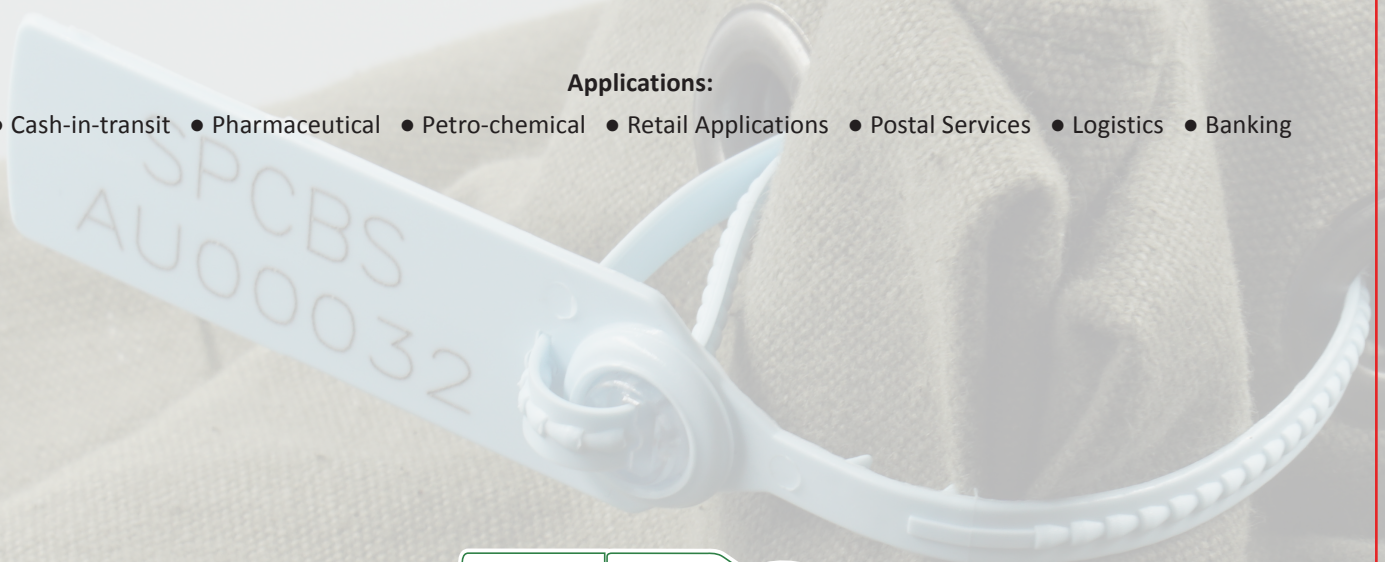
Pull-Tight Seal

***Bold and diversified design for durability and versatility.***

SP Cash Bag Seal is fundamentally designed with a rigid structure. The seal features an extensive range of variations providing security option in any application. With the signature one-way locking mechanism, it is user-friendly to seal and remove.

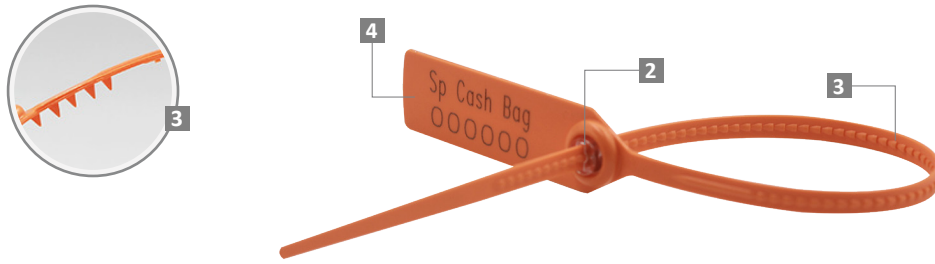
#### Applications:

- Cash-in-transit
- Pharmaceutical
- Petro-chemical
- Retail Applications
- Postal Services
- Logistics
- Banking



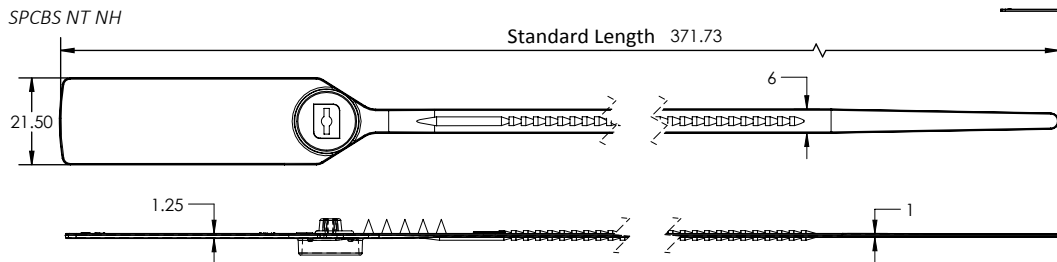
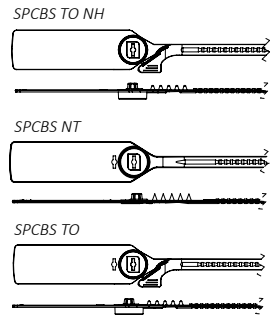
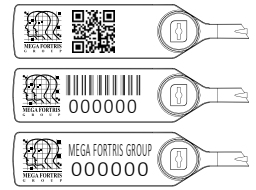
PREVENTION · PROTECTION · PEACE OF MIND





- 1 The SP Cash Bag Seal is moulded with Polypropylene (PP) or high-impact NY material with metal lock encapsulated to complement the long thick strap.
  - 2 One-way locking mechanism is embedded for fast and easy application.
  - 3 The locking ribs on both sides of the locking strap provide greater locking security, while the on the back of the seal provide better grip and stronger endurance during application. Tamper evidence signs are obvious on the strap.
  - 4 Tear-off feature allows quick removal of the seal.
- The larger flap allows ample space for irreversible laser marking of identifiers such as name, logo, barcode, serial number and QR code.
- 5
  - 6 An optional hole (H) across all SPCBS is available for the neat appearance after sealing.
  - 7 Biodegradable additives for plastic material are available.

**LASER MARKING OPTION**



**TECHNICAL SPECIFICATIONS**

**PRODUCT - SP CASH BAG (SPCBS)**

Code	Material	Locking Length	Locking Size	Tensile Strength	Marking Area	Max Marking Digits
SPCBS NT NH	<b>Plastic :</b> Polypropylene (PP) <i>Temperature Range:</i> -5°C to 80°C	250 mm (10 in)	6.0 mm (0.2 in)	<b>PP:</b> ≥25 kgf (≥55.1 lbf)	18 x 50 mm (0.7 x 2.0 in)	<b>Serial no : 10</b> <b>Barcode : 11</b>
SPCBS TO NH						
SPCBS NT	High-impact Nylon (NY) <i>Temperature Range:</i> -25°C to 80°C			<b>NY:</b> ≥28 kgf (≥61.7 lbf)		
SPCBS TO	<b>Metal Jaw :</b> Stainless Steel (SUS 304)					

**PACKAGING**

Carton	Quantity	Dimensions (mm)	Gross Weight (kg)	Volume (m <sup>3</sup> )	Standard Pastel / Solid Colours
Inner	1000	465 x 260 x 190 (18.3 x 10.2 x 7.5 in)	4.8 (10.6 lb)	0.023 (0.8 cu.ft.)	<b>Polypropylene :</b> Body : WH PSYL PSOR PSRD PSBL PSGN Cap : TRNS WH MILKY (BIO)

**Nylon :**  
 Body : WH B YL G RD  
 Cap : TRNS WH MILKY (BIO)

*For colour customisations, kindly contact us for further information.*

**Updated Date : 16 March 2021**