



MEGA FORTRIS
G R O U P

INDICATIVE SEAL
FAST SEAL 3.5 (FS3.5)
Pull-Tight Seal

Stronger strap and spikes for better grip.

Fast Seal 3.5 is an advanced design in the Fast Seal family with a thicker round strap and large marking flap. The strong and durable design enables it to withstand sharp edges and provides higher pull strength endurance. Spikes on the back of the seal provide a firm grip of the application material.

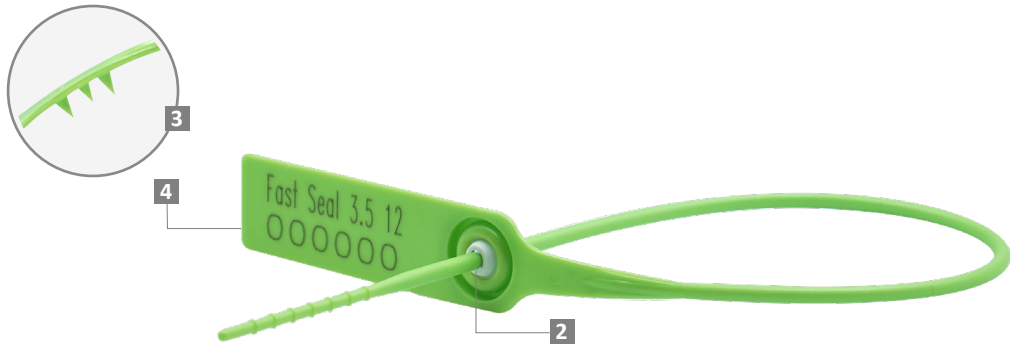
Applications:

- Retail Applications
- Postal Services
- Logistics
- Banking

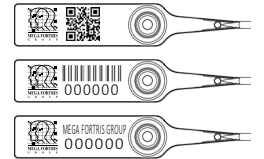


PREVENTION · PROTECTION · PEACE OF MIND

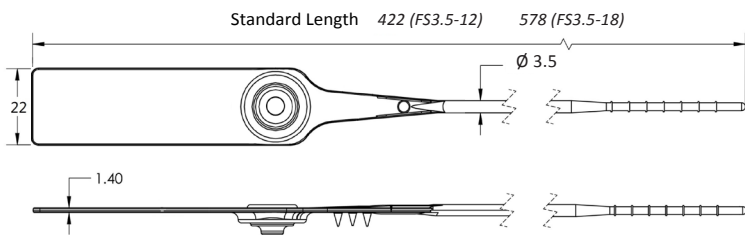




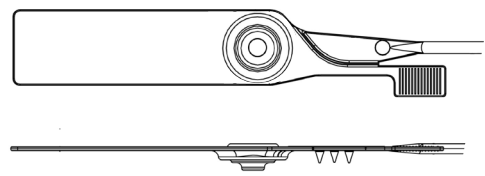
LASER MARKING OPTION



- 1 The Fast Seal 3.5 is moulded with Polypropylene (PP) or high-impact NY material with encapsulated metal lock to complement the long thick strap.
- 2 One-way locking mechanism is embedded for fast and easy application.
- 3 Spikes are placed behind the seal to provide better gripping on the application surface.
- 4 The larger flap allows ample space for identifier marking. Irreversible identifiers such as name, logo, barcode, serial number and QR code are laser-marked on the flap.
- 5 Biodegradable additives for plastic material are available.
- 6 Different strap lengths are available to cater to different applications.
- 7 Tear-off (TO) variation available for easy removal.



FS3.5 TO - 12 & 18



TECHNICAL SPECIFICATIONS

PRODUCT - FAST SEAL 3.5 (FS3.5)

Code	Material	Locking Length	Locking Size	Tensile Strength	Marking Area	Max Marking Digits
FS3.5-12	Plastic : Polypropylene (PP) <i>Temperature Range:</i> -5°C to 80°C	305 mm (12 in)	Ø 3.5 mm (0.1 in)	PP: ≥30 kgf (≥66.1 lbf) NY: ≥35 kgf (≥77.2 lbf)	18 x 56 mm (0.7 x 2.2 in)	Serial no : 15 Barcode : 15
FS3.5-18	Nylon (NY) <i>Temperature Range:</i> -25°C to 80°C Metal Jaw : Stainless Steel (SUS 304)	458 mm (18 in)				

PACKAGING

Carton	Quantity	Dimensions (mm)	Gross Weight (kg)	Volume (m ³)	Standard Pastel / Solid Colours
FS3.5-12 Inner	1000	568 x 235 x 180 (22.4 x 9.3 x 7.1 in)	6.2 (13.67 lb)	0.024 (0.8 cu.ft.)	Polypropylene : Flap : WH PSYL PSOR PSRD PSBL PSGN Cap : TRNS WH MILKY (BIO) Nylon : Flap : WH B YL G RD Cap : TRNS WH MILKY (BIO)
FS3.5-18 Inner		615 x 280 x 280 (24.2 x 11.0 x 11.0 in)	7.71 (17 lb)	0.048 (1.7 cu.ft.)	

For colour customisations, kindly contact us for further information.

Updated Date : 15 June 2021