



MEGA FORTRIS
G R O U P

INDICATIVE SEAL

DRAGON SEAL (DS)

Pull-Tight Seal

Stronger seal structure for security in heavy duty.

Dragon Seal features a series of strong indicative seals with a wide flap. It is rigid to withstand rough handling and has high pull strength endurance. This range of seals is durable and versatile for security and authentication purposes in any application.

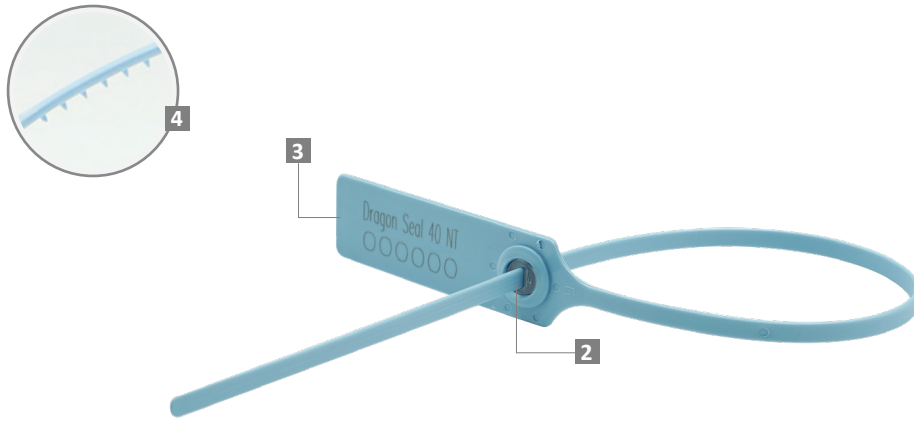
Applications:

- Retail Applications
- Postal Services
- Logistics
- Banking

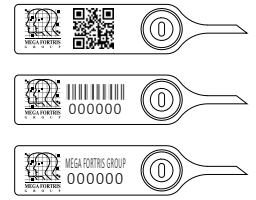


PREVENTION · PROTECTION · PEACE OF MIND

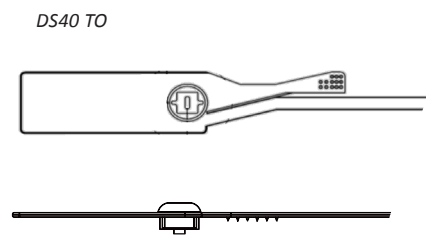
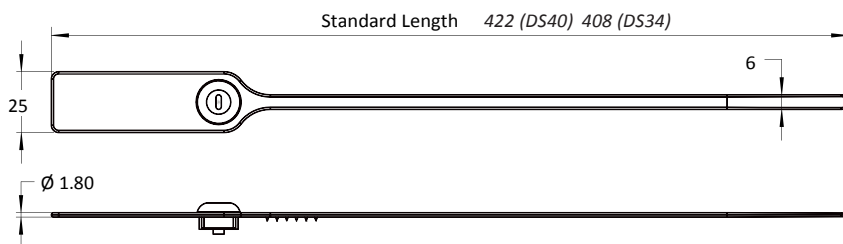




LASER MARKING OPTION



- 1 The Dragon Seal is moulded with Polypropylene (PP) material with metal lock encapsulated to complement the long thick strap.
- 2 One-way locking mechanism is embedded for fast and easy application.
- 3 The large flap allows ample space for identifier marking. Irreversible identifiers such as name, logo, barcode, serial number and QR code are laser-marked on the flap.
- 4 Spikes are placed behind the seal to provide better gripping on the application surface.
- 5 Biodegradable additives for plastic material are available.
- 6 Different strap lengths are available to cater to different applications.
- 7 Tear-off variation of DS40 is available for easy removal.



TECHNICAL SPECIFICATIONS

PRODUCT - DRAGON SEAL (DS)

Code	Material	Locking Length	Locking Size	Tensile Strength	Marking Area	Max Marking Digits
DS34	Plastic : Polypropylene (PP) Temperature Range: -5°C to 80°C	340 mm (13 in)	6.0 mm (0.2 in)	>35 kgf (>77.2 lbf)	21 x 56 mm (0.8 x 2.2 in)	Serial no : 14 Barcode : 13
DS40	Metal Jaw : Stainless Steel (SUS 304)	400 mm (16 in)				

PACKAGING

Carton	Quantity	Dimensions (mm)	Gross Weight (kg)	Volume (m ³)	Standard Pastel Colours
DS34 Inner	1000	562 x 316 x 244 (22.1 x 12.4 x 9.6 in)	7.69 (16.95 lb)	0.043 (1.5 cu.ft.)	Body : WH PSYL PSOR PSRD PSBL PSGN
DS40 Inner			8.79 (19.38 lb)		Cap : TRNS

For colour customisations, kindly contact us for further information.

Updated Date : 15 March 2021