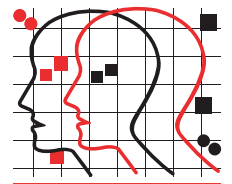
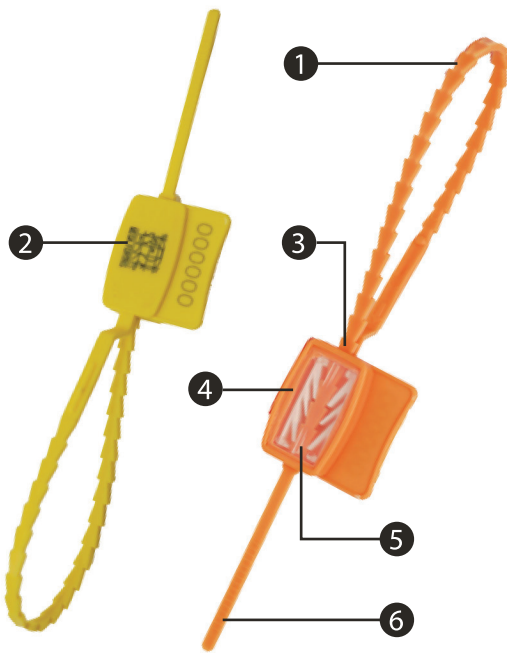


# TTSP - Triple Tight SP Seal



**MEGA FORTRIS  
NEW ZEALAND**



The Triple Tight SP Seal is a strong, tamper-evident indicative seal that suits almost any application.

The strap on the Triple Tight SP Seal is a mere 4 mm wide and is equipped with an advanced floating locking mechanism that makes it more user-friendly and makes colour-coding an additional option.

Standard markings include serial number and customer name/ logo and a variety of bar codes can also be marked with laser technology. Typical applications include banks and security companies, airlines, ground transportations, mail services, hospitals, casinos, hotels and tankers.

## FEATURES

- 1 Tight grip on bags and other soft materials is possible with the minimal loop produced when the seal is tightened.
- 2 TripleTight Seals are etched with permanent laser marking. Laser marking offers the highest level of security as it cannot be removed and replaced.
- 3 Ultrasonic welding technology is used to fasten caps to the seals. Ultrasonic welding is too strong to be cut or forced open without clear evidence of tampering.
- 4 The Inspection Window is a unique feature which enables quick and easy visual checking of the locking mechanism. Most other seals feature hidden locking mechanisms, making them less tamper evident because part of the seal cannot be visually inspected.
- 5 The staggered triple locking mechanism provides secured locking even if sudden assertive force is applied.
- 6 Finger grips at the end of the tail make the seal very easy to apply even in extreme temperatures.

## SPECIFICATIONS

|                  |   |
|------------------|---|
| Material         | Polypropylene with acetal insert          |
| Locking Length   | 20cm, 15cm, 46cm                          |
| Strap Dimensions | 2.0mm x 4.0mm                             |
| Pull Strength    | 20kg                                      |
| Marking Area     | Cap: 1.0cm x 2.0cm<br>Flap: 0.7cm x 2.2cm |
| Marking Digits   | Max 8                                     |
| Standard Colours | White with inserts in Blue                |

## CONTACT US

### NEW ZEALAND

1/33 Spartan Road  
Takanini

Auckland 2105

Ph: +64 9 265 0262

[www.megafortris.co.nz](http://www.megafortris.co.nz)

### AUSTRALIA

Unit 2, 20 Wilmette Place

Mona Vale

New South Wales 2103

Ph: +61 2 9999 2324

[www.megafortris.com.au](http://www.megafortris.com.au)



ASK US ABOUT



**FMM EXCELLENCE  
AWARD 2012**  
QUEST FOR CONTINUOUS IMPROVEMENT  
BEST MANUFACTURER IN MALAYSIA IN 2012