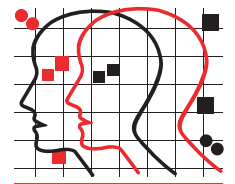


Simulock

Indicative Seal/Data Sheet



MEGA FORTRIS
NEW ZEALAND

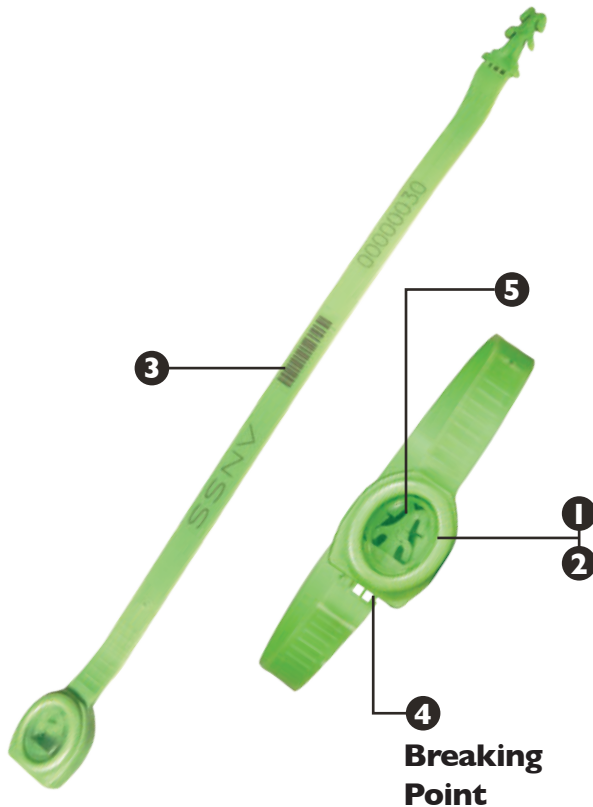


Tamper-Evident Truck and Container Seal

The Simulock is easy to apply and easy to inspect. This seal optimises security and operation efficiency. The unique features found on the Simulock make it so much more than just another ring seal.

Standard markings on the Simulock Seal include serial numbers and a standard barcode.

The Simulock is widely used for trucks and tankers, customs control, airline cargo, warehouses, roll cages, rail wagons, empty shipping containers, etc.



**Breaking
Point**

FEATURES

- 1 The transparent Inspection Window is a unique feature developed to enable quick and easy visual checking of the locking mechanism.
- 2 The Inspection Window is ultrasonically welded to the seal. Ultrasonic welding is permanent and strong; cutting or forcing it open will leave clear evidence of tampering.
- 3 The Simulock is etched with permanent laser marking, which offers the highest level of marking security.
- 4 The breaking point provides easy removal of the seal. Another prominent security feature is the security breaking

lines that prevent a broken seal from being glued or welded together without leaving evidence.

- 5 The simultaneous double-locking mechanism of the Simulock makes tampering very difficult.

SPECIFICATIONS

Product Code SMLK	Material Strap: PP Cap: PP	Locking Size 0.8cm	Locking Length 187cm
Tensile Strength 25kg	Marking Area Flap: 0.6 x 12cm	Max Marking Digits Serial No: 10 Barcode: 9	

OUTER CARTON

Qty per Carton 1000 pcs	Dimensions 338 x 255 x 190mm	Weight kg/car- ton 4.35 kgs	Volume/carton 0.016m ³
-----------------------------------	--	---	---

Standard colours
White and pastel blue

NOTE: Non-specified colours available upon request.

CONTACT US

NEW ZEALAND

1/33 Spartan Road
Takanini
Auckland 2105
Ph: +64 9 265 0262

www.megafortris.co.nz

AUSTRALIA

Unit 2, 20 Wilmette Place
Mona Vale
New South Wales 2103
Ph: +61 2 9999 2324

www.megafortris.com.au



ASK US



**FMM EXCELLENCE
AWARD 2012**
QUEST FOR CONTINUOUS IMPROVEMENT
BEST MANUFACTURER IN MALAYSIA IN 2012