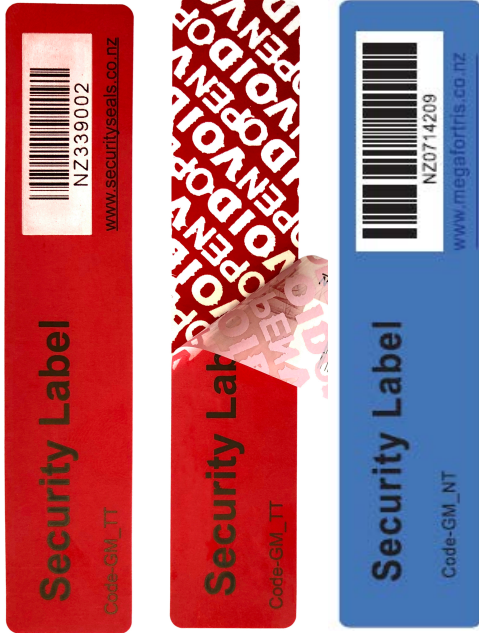


Labels

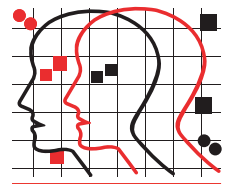
Tamper-Evident Labels



Tamper Evident Labels are made of high quality adhesives, which are suitable for almost all application surfaces either indoor or outdoor.

Different designs and materials meet different needs of security applications. These high quality labels are easy to apply and easy to remove, extremely tamper evident and are widely used to detect unauthorised activities by authorities such as the police and military, banks, airlines, transporters in general as well as all kinds of producers and exporters.

In addition to the hidden "Void / Open" message, all Tamper Evident Labels have an optional security cut feature on the face of the label, which divides the label into smaller parts when it is removed. The design of the security cuts makes it impossible to put back the label in place again without evidence. While Tamper Evident Labels are generally used as a highly visible form of tamper indication, some labels are used as covert seals using UV coating or printing ink as a means of detection and authenticity.



MEGA FORTRIS
NEW ZEALAND



FEATURES

- 1 All the Tamper Evident Labels are self-adhesive and designed for surface mounting applications.
- 2 Tamper Evident Labels can be manufactured with an optional Interlocking security cut.
- 3 Two types of material are available: non transfer and total transfer.
- 4 Customised marking and design with customer information, sequential numbering and bar-code identification.
- 5 A hidden "void / open" message is clearly visible when any part of the label is lifted so unauthorised opening can be detected at a glance.
- 6 Some Tamper Evident Labels are stretchable, which is beneficial where movement is anticipated.

SPECIFICATIONS

The materials used for Tamper Evident Labels vary according to application and security but include polyester, vinyl, polyethylene and rubber. Tamper Evident Labels are heat and freeze resistant, resistant to freon gas and heat attack. Any attempt to remove a label using a heating source or freon gas will be futile as the hidden message still triggers when peeled.

There are several standard sizes – but the labels can be sized to fit individual requirements. The standard colours are red, blue, silver and transparent depending on the application.

Customised coloured labels can be produced.

Typical applications of Tamper Evident Labels are found on sensitive documents and security envelopes, cartons and boxes, IT equipment, evidence bags, first aid boxes, utility metres and timers, cash boxes and ATMs, glass and plastic containers, military equipment, ballot boxes, canisters and drums, food and beverage containers.

CONTACT US

NEW ZEALAND

1/33 Spartan Road
Takanini
Auckland 2105

Ph: +64 9 265 0262

www.megafortris.co.nz

AUSTRALIA

Unit 2, 20 Wilmette Place
Mona Vale

New South Wales 2103

Ph: +61 2 9999 2324

www.megafortris.com.au



FMM EXCELLENCE AWARD 2012
QUEST FOR CONTINUOUS IMPROVEMENT
BEST MANUFACTURER IN MALAYSIA IN 2012

ASK US ABOUT

