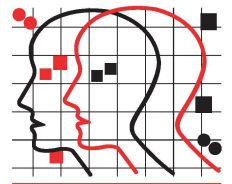


SP CBS Cash Bag Seal



**MEGA FORTRIS
NEW ZEALAND**

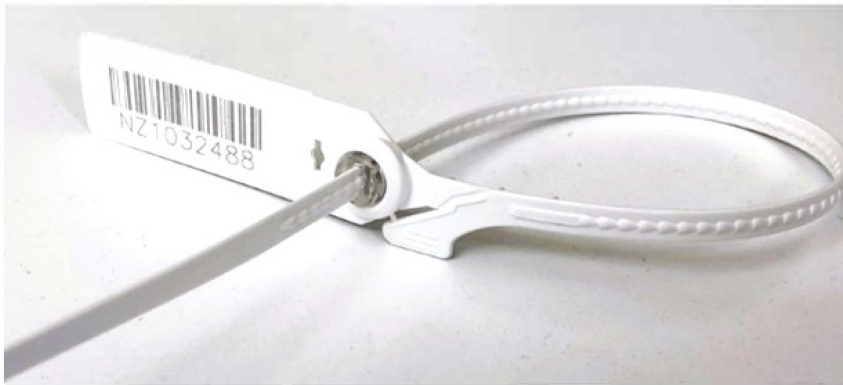


SP Cash Bag Seal



The SP CBS Seal is New Zealand Customs approved for particular applications, and is a smooth pull, all purpose indicative security seal with metal locking for added security.

SP Cash Bag Seal - Tear Off option



Available with or without it's unique 'easy tear off' feature, the SP CBS is a fully functional and versatile smooth pull seal that is used for many applications including the most popular – sealing of curtain side trucks and securing cash bags.

Standard seal markings: serial number, customer name/ logo and barcodes.

FEATURES

- 1 The SP CBS Cash Bag seals are etched with permanent laser marking. Laser marking offers the highest level of security as it cannot be removed and replaced.
- 2 Metal clip locking insert provides a more secure product and greater pull strength.
- 3 The spikes on the back of the strap provide a better grip on bags and other slippery materials.
- 4 Heat staking technology is used to fasten caps to the seals. Heat staking is permanent and cannot be cut or forced open without leaving clear evidence of tampering.

SPECIFICATIONS

Material Polypropylene (stainless steel metal pin)	Locking Length 250mm	Strap Dimensions 6mm
Pull Strength 25kg	Marking Area Flap: 18mm x 50mm	Max Marking Digits Serial no: 10 Barcode: 11
Colours Pastel Blue, White, White TO		

Microsoft
GOLD CERTIFIED
Partner



CONTACT US

NEW ZEALAND

Office/Warehouse:
1/33 Spartan Road

Takanini

Auckland 2105

Ph: +64 9 265 0262

www.megafortris.co.nz

AUSTRALIA

Unit 2, 20 Wilmette Place

Mona Vale

New South Wales 2103

Ph: +61 2 9999 2324

www.megafortris.com.au

ASK US ABOUT



This product meets ASTM D6400
Standard Specification for Compostable Plastics



**FMM EXCELLENCE
AWARD 2012**
QUEST FOR CONTINUOUS IMPROVEMENT
BEST MANUFACTURER IN MALAYSIA IN 2012