



MEGA FORTRIS
G R O U P

INDICATIVE SEAL

KEESEAL (KES)

Pull-Tight Seal

Ruler-like strap for locking precision.

KEESEAL is a plastic indicative seal with a measurement ruler embedded at the back of the seal. In addition to its main function as a security seal in securing assets, the embedded ruler can also be utilized as a tool for security measurement. These seals include the BioSphere bio-additive.

To provide eco-conscious solutions on a wide array of applications, all Mega Fortris' security seal product lines with plastic content will include the BioSphere bio-additive from 13th May 2024.

Applications:

- Retail Applications
- Authentication Tagging
- Logistics
- Banking



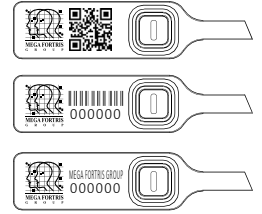
Our biodegradable plastic additives go deeper, allowing microbes to consume the C-C bonds within plastic's structure at a macromolecular level. This increases the surface area of plastic products and enables plastophilic microbes to attach to the polymer's newfound cavities. So, unlike regular plastic that can sit in a landfill for hundreds or thousands of years, plastic enhanced with BioSphere attracts over 600 different types of microbes that effectively digest and consume it.

PREVENTION · PROTECTION · PEACE OF MIND





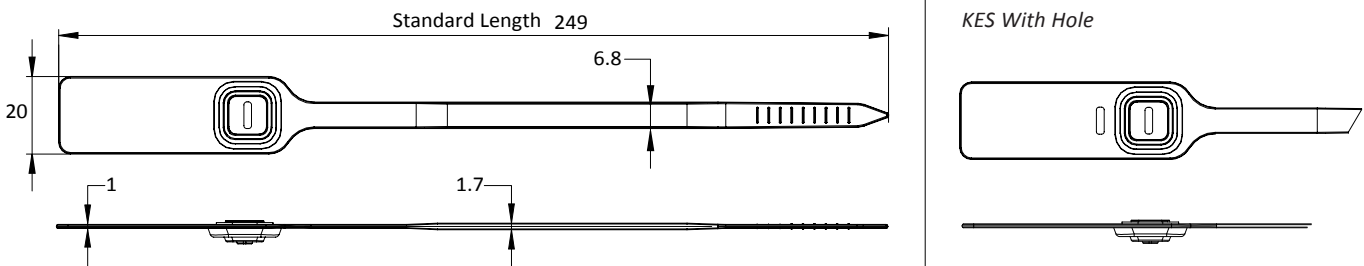
LASER MARKING OPTION



VIEW APPLICATION GIF



- 1 The KEESEAL is moulded with Polypropylene (PP) material with the metal lock ultrasonically encapsulated and heat staking to complement the long thick strap.
- 2 The strap is designed with a brief ruler at the back for measuring and clear indication of tampering.
- 3 One-way locking mechanism is embedded for fast and easy application.
- 4 Irreversible identifiers such as name, logo, barcode, serial number and QR code are laser-marked on the flap.
- 5 These seals include the BioSphere bio-additive.
- 6 An optional hole on the flap is designed for a neat appearance after sealing.



TECHNICAL SPECIFICATIONS

PRODUCT - KEESEAL (KES)

Code	Material	Locking Length	Locking Size	Tensile Strength	Marking Area	Max Marking Digits
KES	Plastic : Polypropylene (PP) Temperature Range: -5°C to 80°C Metal Jaw : Stainless Steel (SUS 304)	158 mm (6 in)	6.8 mm (0.3 in)	>25 kgf (>55.1 lbf)	16 x 33 mm (2.6 x 1.3 in)	Serial no : 12 Barcode : 10

PACKAGING

Carton	Quantity	Dimensions (mm)	Gross Weight (kg)	Volume (m ³)	Standard Pastel Colours
Inner	1000	330 x 220 x 155 (13.0 x 8.7 x 6.1 in)	3.62 (8.0 lb)	0.011 (0.4 cu.ft.)	Body : WH PSYL PSOR PSRD PSBL PSGN BK Cap : WH FR

For colour customisations, kindly contact us for further information.

Updated Date : 10 May 2024