

## INDICATIVE SEAL

### FAST SEAL 3.5 (FS 3.5)

Pull-Tight Seal

#### ***Stronger strap and spikes for better grip.***

Fast Seal 3.5 is an advanced design in the Fast Seal family with a thicker round strap and large marking flap. The strong and durable design enables it to withstand sharp edges and provides higher pull strength endurance. Spikes on the back of the seal provide a firm grip of the application material.

These seals include the BioSphere bio-additive.

To provide eco-conscious solutions on a wide array of applications, all Mega Fortris' security seal product lines with plastic content will include the BioSphere bio-additive from 13th May 2024.

#### **Applications:**

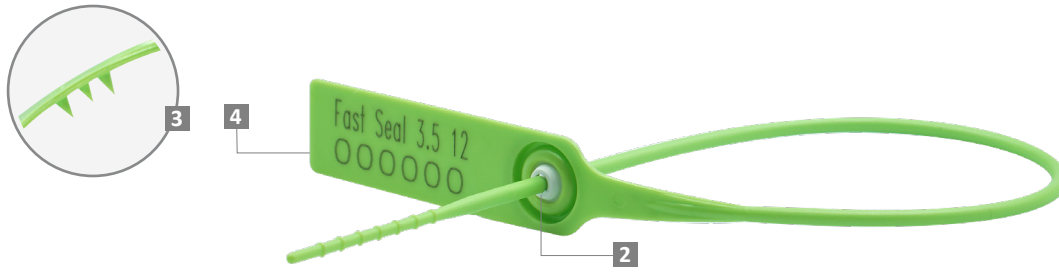
- Retail Applications
- Postal Services
- Logistics
- Banking



Our biodegradable plastic additives go deeper, allowing microbes to consume the C-C bonds within plastic's structure at a macromolecular level. This increases the surface area of plastic products and enables plastophilic microbes to attach to the polymer's newfound cavities. So, unlike regular plastic that can sit in a landfill for hundreds or thousands of years, plastic enhanced with BioSphere attracts over 600 different types of microbes that effectively digest and consume it.

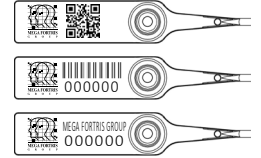
PREVENTION · PROTECTION · PEACE OF MIND



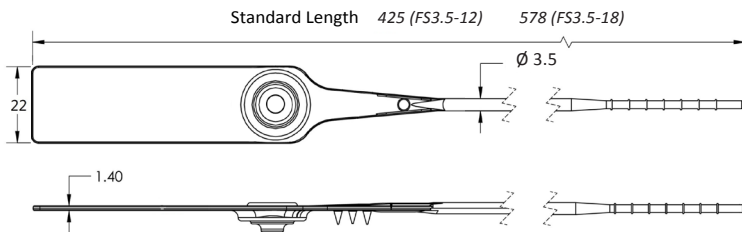


- 1 The Fast Seal 3.5 is moulded with Polypropylene (PP) or high-impact NY material with the metal lock ultrasonically encapsulated to complement the long thick strap.
- 2 One-way locking mechanism is embedded for fast and easy application.
- 3 Spikes are placed behind the seal to provide better grip on the application surface.
- 4 The larger flap allows ample space for identifier marking. Irreversible identifiers such as name, logo, barcode, serial number and QR code are laser-marked on the flap.
- 5 These seals include the BioSphere bio-additive.
- 6 Different strap lengths are available to cater to different applications.
- 7 Tear-off (TO) variation available for Fast Seal 18 inches for easy removal.

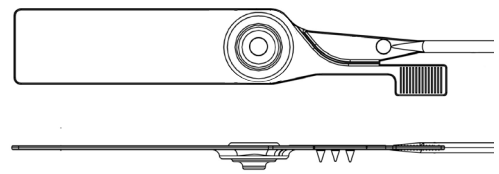
LASER MARKING OPTION



VIEW APPLICATION GIF



FS3.5 TO-18



TECHNICAL SPECIFICATIONS

PRODUCT - FAST SEAL 3.5 (FS 3.5)

Code	Material	Locking Length	Locking Size	Tensile Strength	Marking Area	Max Marking Digits
FS 3.5-12	<b>Plastic :</b> Polypropylene (PP) Temperature Range: -5°C to 80°C	305 mm (12 in)	Ø 3.5 mm (0.1 in)	<b>PP:</b> ≥30 kgf (≥66.1 lbf) <b>NY:</b> ≥35 kgf (≥77.2 lbf)	18 x 56 mm (0.7 x 2.2 in)	<b>Serial no :</b> 15 <b>Barcode :</b> 15
	Nylon (NY) Temperature Range: -20°C to 80°C	458 mm (18 in)				
FS 3.5-18	<b>Metal Jaw :</b> Stainless Steel (SUS 304)					

PACKAGING

Carton	Quantity	Dimensions (mm)	Gross Weight (kg)	Volume (m <sup>3</sup> )	Standard Pastel / Solid Colours
FS 3.5-12 Inner	1000	568 x 235 x 180 (22.4 x 9.3 x 7.1 in)	6.2 (13.67 lb)	0.024 (0.8 cu.ft.)	<b>Polypropylene :</b> Flap : <span>WH</span> <span>PSYL</span> <span>PSOR</span> <span>PSRD</span> <span>PSBL</span> <span>PSGN</span> <span>BK</span> Cap : <span>WH</span> <span>FR</span>
		615 x 280 x 280 (24.2 x 11.0 x 11.0 in)	7.71 (17 lb)	0.048 (1.7 cu.ft.)	
FS 3.5-18 Inner					<b>Nylon :</b> Flap : <span>WH</span> <span>B</span> <span>YL</span> <span>G</span> <span>RD</span> <span>BK</span> Cap : <span>WH</span> <span>FR</span>

For colour customisations, kindly contact us for further information.

Updated Date : 10 May 2024